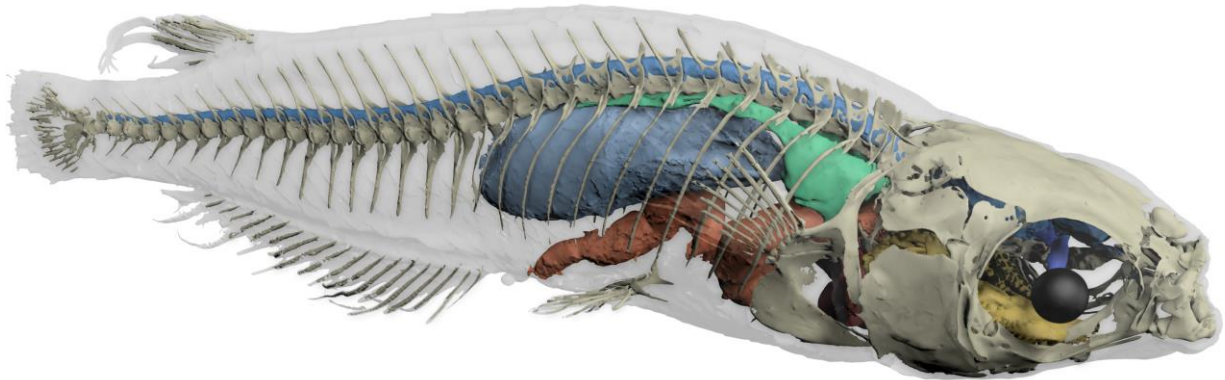


12.02.2020

## Student assistants for the evaluation and processing of tomographic data



Segmented 3D dataset of a medaka fish

The Institute for Photon Science and Synchrotron Radiation (IPS) operates the X-ray imaging beamlines of the KIT Light Source, a particle accelerator located at Campus North. One focus of our work is high-throughput microtomography of biological samples (especially fish & insects). We are looking for student assistants who support us in the reconstruction and evaluation of 3D data acquired during our experiments.

The activities include:

- Data management
- Image stack segmentation
- Creation of virtual 3D models

Your qualifications:

- Study of natural or computer science
- Fluent in German and / or English
- Knowledge of image processing are desirable

We offer:

- working in an interdisciplinary team
- unique insights into working at a particle accelerator
- flexible working hours

Workplace is Campus North. Appointment date, contract duration and number of working hours according to prior agreement. Long-term employment is desirable.

**If you are interested, please send an email to:**

Sabine Bremer (sabine.bremer@kit.edu) or

Dr. Thomas van de Kamp (thomas.vandekamp@kit.edu)



Illustration of a fossil parasitic wasp based on tomography data